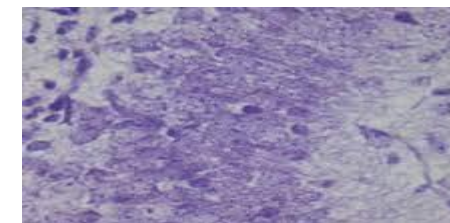
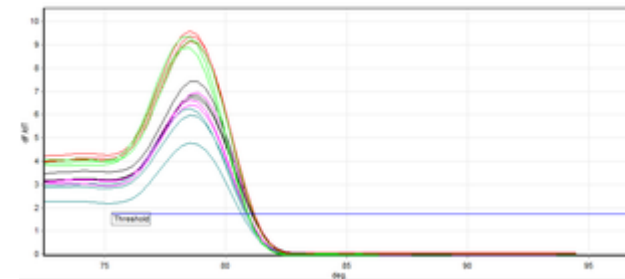


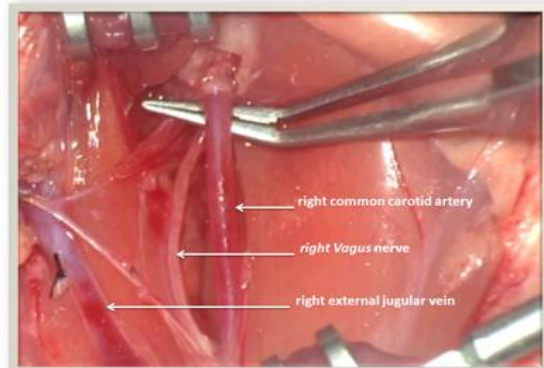
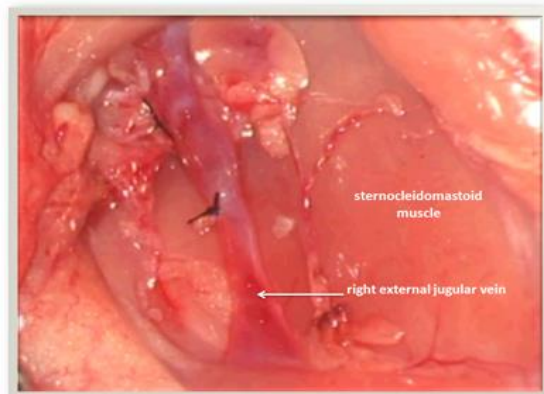


N = 8
(Control)



real-time PCR
Cresyl violet staining

N = 48
Induction of Cerebral
ischemia/reperfusion
(45 min)



N = 12
(cerebral ischemia)

N = 12
(Ischemia + Adenosine)

5 days /week for 8 weeks

N = 12
(Ischemia + endurance
training)

5 days /week for 8 weeks
0.1 mg/ml/kg (IP)

N = 12
(Ischemia + endurance
training + adenosine)

